

Circuito de Catalunya
Winter Series Barcelona
Free practice - 7

Results

18/02/2017

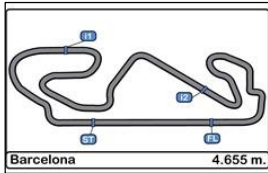
Ord.	Nº	Entrant / Team	Nat.	Driver	Nat.	St.	Driver 2	Nat.	St.	Vehicle	Cat.	Cla.	Laps	Best Time	Gap	Interval	Km/h
1	8	AF Corse	ITA	Piergiuseppe Perazzini	ITA	Bronze	Marco Cioci	ITA	Gold	Ferrari 488 GT3	PROAM	1º	22	20	1'46.809		156.897
2	16	Drivex School	ESP	Marcelo Hahn	BRA		Allam Khodair	BRA		Audi R8 LMS Ultra			17	16	1'46.876	0"067	156.799
3	104	RACE	ESP	Marzio Basso			Victor Bouverg			BMW M6 GT3			23	11	1'48.172	1"363	154.920
4	555	FFF Racing Team by ACM	CHN	Hiroshi Hamaguchi	JPN	Bronze	Vitantonio Liuzzi	ITA	Platinum	Lamborghini Huracan GT3	PROAM	2º	24	23	1'48.318	1"509	154.711
5	9	Spirit of Race	CHE	Motoaki Ishikawa	JPN	Bronze	Olivier Beretta	ITA	Gold	Ferrari 488 GT3	PROAM	3º	21	6	1'49.254	2"445	153.386
6	11	Raton Racing	ITA	Edoardo Liberati	ITA	Silver	Link Kang	CHN	Silver	Lamborghini Huracan GT3	PRO	1º	14	12	1'49.262	2"453	153.374
7	43	PRO GT by Philippe Almeras	FRA	Philip Morin	SWE					Porsche 991 GT3 Cup			10	4	1'51.092	4"283	150.848
8	14	Kessel Racing	CHE	Claudio Schiavoni	ITA	Bronze				Ferrari 458 GT3	AM	1º	11	9	1'51.300	4"491	150.566
9	5	SF Racing	CHN	Fu Songyang	CHN	Bronze	Andrea Caldarelli	ITA	Gold	Ferrari 488 GT3	PROAM	4º	16	15	1'51.674	4"865	150.062
10	25	FF Corse	GBR	Ivor Dunbar	GBR	Bronze	Johnny Mowlem	GBR	Gold	Ferrari 488 GT3	PROAM	5º	27	19	1'54.936	8"127	145.803
11	46	FF Corse	GBR	Bonany Grimes	GBR	Bronze	Johnny Mowlem	GBR	Gold	Ferrari 458 Challenge			29	27	1'55.523	8"714	145.062
12	77	Stile F Squadra Corse	SMR	Jonathan Hui	RUS	Bronze				Ferrari 458 GT3	AM	2º	19	9	1'56.010	9"201	144.453
13	15	Kessel Racing	CHE	Peter Goerke	CHE	Bronze				Ferrari 458 Challenge			12	11	1'57.309	10"500	142.853
14	12	Kessel Racing	CHE	Deborah Mayer	FRA	Bronze				Ferrari 458 GT3	AM	3º	6	5	2'00.857	14"048	138.660
15	89	Spirit of Race	CHE	Peter Heh	SGP		Nicola Caldani	ITA		Ferrari 458 Challenge			20	19	2'02.961	16"152	136.287

Published at:.....

Track Status **DRY**

Stewards: 	Race Director: 	Timekeeper: 
----------------------	---------------------------	---



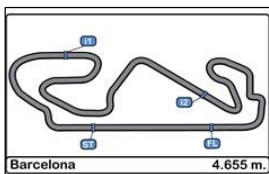


Circuito de Catalunya
Winter Series Barcelona
Free practice - 7

LAP ANALYSIS

18/02/2017

Number	5			8			9			11			12			
	Lap	Lap Time	Partial	Speed	Lap Time	Partial	Speed	Lap Time	Partial	Speed	Lap Time	Partial	Speed	Lap Time	Partial	Speed
1ª - 1	0'32.954	0'32.954		254.717	0'32.350	0'32.350		254.717	0'31.945	0'31.945		258.993	0'31.136	0'31.136		263.415
1ª - 2	1'16.948	0'43.994			1'15.243	0'42.893			1'15.172	0'43.227			1'13.206	0'42.070		
1ª - 3	1'56.118	0'39.170			1'52.761	0'37.518			1'52.684	0'37.512			1'55.081	0'41.875		
2ª - 1	0'33.155	0'33.155		256.533	0'31.444	0'31.444		257.143	0'31.640	0'31.640		260.241	0'31.108	0'31.108		263.415
2ª - 2	1'17.427	0'44.272			1'13.910	0'42.466			1'14.288	0'42.648			1'13.364	0'42.256		
2ª - 3	1'56.804	0'39.377			1'51.130	0'37.220			1'50.956	0'36.668			1'49.866	0'36.502		
3ª - 1	0'32.807	0'32.807		254.118	0'32.064	0'32.064		258.993	0'31.679	0'31.679		261.502	0'31.127	0'31.127		262.136
3ª - 2	1'16.218	0'43.411			1'14.153	0'42.089			1'14.576	0'42.897			1'13.263	0'42.136		
3ª - 3	1'54.738	0'38.520			1'50.937	0'36.784			2'00.964	0'46.388		PIT	1'57.111	0'43.848		PIT
4ª - 1	0'32.304	0'32.304		255.320	0'31.221	0'31.221		258.374	2'36.103	2'36.103		183.987	4'14.974	4'14.974		156.522
4ª - 2	1'15.628	0'43.324			1'13.334	0'42.113			3'18.892	0'42.789			4'58.039	0'43.065		
4ª - 3	1'53.699	0'38.071			1'49.880	0'36.546			3'55.585	0'36.693			5'42.203	0'44.164		PIT
5ª - 1	0'32.017	0'32.017		255.320	0'31.118	0'31.118		258.993	0'31.056	0'31.056		262.136	6'36.443	6'36.443		174.194
5ª - 2	1'15.156	0'43.139			1'13.135	0'42.017			1'13.256	0'42.200			7'18.632	0'42.189		
5ª - 3	1'53.240	0'38.084			1'49.648	0'36.513			1'49.254	0'35.998			7'55.226	0'36.594		
6ª - 1	0'32.063	0'32.063		255.925	0'31.165	0'31.165		257.757	0'30.776	0'30.776		261.502	0'31.265	0'31.265		264.059
6ª - 2	1'15.497	0'43.434			1'13.067	0'41.902			1'12.848	0'42.072			1'13.133	0'41.868		
6ª - 3	1'53.929	0'38.432			1'50.217	0'37.150			1'49.275	0'36.427			1'49.426	0'36.293		
7ª - 1	0'32.369	0'32.369		256.533	0'31.275	0'31.275		258.993	0'31.056	0'31.056		261.502	0'31.047	0'31.047		264.706
7ª - 2	1'15.850	0'43.481			1'13.324	0'42.049			1'13.953	0'42.897			1'13.642	0'42.595		
7ª - 3	1'53.990	0'38.140			1'55.252	0'41.928		PIT	1'50.336	0'36.383			1'59.032	0'45.390		PIT
8ª - 1	0'32.249	0'32.249		255.925	4'51.469	4'51.469		184.301	0'30.908	0'30.908		262.136	2'26.294	2'26.294		179.701
8ª - 2	1'18.739	0'46.490			5'33.697	0'42.228			1'12.802	0'41.894			3'08.612	0'42.318		
8ª - 3	1'58.539	0'39.800			6'10.049	0'36.352			1'49.425	0'36.623			3'45.203	0'36.591		
9ª - 1	0'33.651	0'33.651		243.793	0'31.341	0'31.341		259.616	0'31.180	0'31.180		261.502	0'31.259	0'31.259		264.706
9ª - 2	1'16.854	0'43.203			1'13.449	0'42.108			1'13.259	0'42.079			1'14.823	0'43.564		
9ª - 3	1'56.165	0'39.311			1'50.436	0'36.987			1'49.547	0'36.288			1'51.354	0'36.531		
10ª - 1	0'31.885	0'31.885		257.143	0'31.598	0'31.598		258.993	0'30.922	0'30.922		262.136	0'31.108	0'31.108		264.059
10ª - 2	1'15.259	0'43.374			1'13.929	0'42.331			1'14.180	0'43.258			1'12.940	0'41.832		
10ª - 3	1'54.141	0'38.882			1'51.047	0'37.118			1'59.578	0'45.398		PIT	1'49.264	0'36.324		
11ª - 1	0'32.370	0'32.370		254.717	0'31.100	0'31.100		258.993	3'46.457	3'46.457		183.987	0'31.039	0'31.039		262.774
11ª - 2	1'19.075	0'46.705			1'12.939	0'41.839			4'28.579	0'42.122			1'12.832	0'41.793		
11ª - 3	1'57.812	0'38.737			1'49.417	0'36.478			5'05.200	0'36.621			1'49.262	0'36.430		
12ª - 1	0'32.293	0'32.293		255.925	0'31.274	0'31.274		258.374	0'31.219	0'31.219		260.870	0'31.142	0'31.142		262.774
12ª - 2	1'15.015	0'42.722			1'13.112	0'41.838			1'13.177	0'41.958			1'13.032	0'41.890		
12ª - 3	1'52.363	0'37.348			1'56.421	0'43.309		PIT	1'49.828	0'36.651			1'49.512	0'36.480		
13ª - 1	0'31.826	0'31.826		255.320	6'57.821	6'57.821		179.701	0'31.267	0'31.267		261.502	0'31.854	0'31.854		263.415
13ª - 2	1'14.493	0'42.667			7'39.938	0'42.117			1'13.181	0'41.914			1'14.686	0'42.832		
13ª - 3	1'51.932	0'37.439			8'16.113	0'36.175			1'49.936	0'36.755			2'00.508	0'45.822		PIT
14ª - 1	0'31.619	0'31.619		255.925	0'30.705	0'30.705		259.616	0'31.268	0'31.268		260.870				
14ª - 2	1'14.408	0'42.789			1'12.606	0'41.901			1'13.608	0'42.340						
14ª - 3	1'51.674	0'37.266			1'48.850	0'36.244			1'50.147	0'36.539						
15ª - 1	0'35.652	0'35.652		255.925	0'30.824	0'30.824		260.241	0'31.105	0'31.105		260.870				
15ª - 2	1'23.566	0'47.914			1'14.300	0'43.476			1'12.922	0'41.817						
15ª - 3	2'12.430	0'48.864		PIT	1'50.224	0'35.924			1'50.243	0'37.321						
16ª - 1					0'30.701	0'30.701		257.143	0'31.152	0'31.152		260.870				
16ª - 2					1'12.017	0'41.316			1'13.110	0'41.958						
16ª - 3					1'47.822	0'35.805			1'49.869	0'36.759						
17ª - 1					0'30.628	0'30.628		258.374	0'30.959	0'30.959		261.502				
17ª - 2					1'11.723	0'41.095			1'12.890	0'41.931						
17ª - 3					1'47.281	0'35.558			1'49.465	0'36.575						
18ª - 1					0'30.770	0'30.770		259.616	0'31.102	0'31.102		261.502				
18ª - 2					1'11.937	0'41.167			1'13.053	0'41.951						
18ª - 3					1'47.469	0'35.532			1'49.309	0'36.256						
19ª - 1					0'30.609	0'30.609		258.993	0'31.487	0'31.487		261.502				
19ª - 2					1'11.496	0'40.887			1'13.307	0'41.820						
19ª - 3					1'46.809	0'35.313			1'49.791	0'36.484						
20ª - 1					0'30.562	0'30.562		260.241	0'31.074	0'31.074		261.502				
20ª - 2					1'11.813	0'41.251			1'13.290	0'42.216						
20ª - 3					1'47.555	0'35.742			2'11.083	0'57.793		PIT				
21ª - 1					0'33.202	0'33.202		261.502								
21ª - 2					1'15.504	0'42.302										
21ª - 3					1'57.591	0'42.087		PIT								



Circuito de Catalunya
Winter Series Barcelona
Free practice - 7

LAP ANALYSIS

18/02/2017

Number	5			8			9			11			12		
	Lap Time	Partial	Speed	Lap Time	Partial	Speed	Lap Time	Partial	Speed	Lap Time	Partial	Speed	Lap Time	Partial	Speed
22 ^a - 1															
22 ^a - 2															
22 ^a - 3															
23 ^a - 1															
23 ^a - 2															
23 ^a - 3															
24 ^a - 1															
24 ^a - 2															
24 ^a - 3															
25 ^a - 1															
25 ^a - 2															
25 ^a - 3															
26 ^a - 1															
26 ^a - 2															
26 ^a - 3															
27 ^a - 1															
27 ^a - 2															
27 ^a - 3															
28 ^a - 1															
28 ^a - 2															
28 ^a - 3															

Ideal Lap	
0'31.619	0'31.619
1'14.286	0'42.667
1'51.552	0'37.266

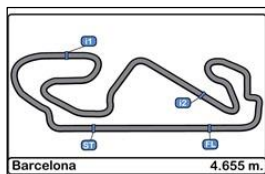
Ideal Lap	
0'30.562	0'30.562
1'11.449	0'40.887
1'46.762	0'35.313

Ideal Lap	
0'30.776	0'30.776
1'12.593	0'41.817
1'48.591	0'35.998

Ideal Lap	
0'31.039	0'31.039
1'12.832	0'41.793
1'49.125	0'36.293

Ideal Lap	
0'33.864	0'33.864
1'20.181	0'46.317
2'00.630	0'40.449

Ideal Best Lap	
0'30.419	0'30.419
1'11.306	0'40.887
1'46.531	0'35.225

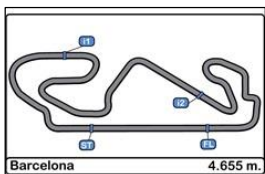


Circuito de Catalunya
Winter Series Barcelona
Free practice - 7

LAP ANALYSIS

18/02/2017

Number	14			15			16			25			43			
	Lap	Lap Time	Partial	Speed	Lap Time	Partial	Speed	Lap Time	Partial	Speed	Lap Time	Partial	Speed	Lap Time	Partial	Speed
1ª - 1	0'32.780	0'32.780		257.757	0'36.829	0'36.829	260.870	0'31.097	0'31.097	257.143	0'33.368	0'33.368	258.374	0'32.354	0'32.354	254.118
1ª - 2	1'16.385	0'43.605			1'24.422	0'47.593		1'12.772	0'41.675		1'18.895	0'45.527		1'15.207	0'42.853	
1ª - 3	1'53.932	0'37.547			2'21.813	0'57.391	PIT	1'48.863	0'36.091		1'57.504	0'38.609		1'51.920	0'36.713	
2ª - 1	0'32.074	0'32.074		257.143	2'07.163	2'07.163	155.845	0'30.905	0'30.905	260.241	0'33.250	0'33.250	257.757	0'31.769	0'31.769	258.374
2ª - 2	1'15.527	0'43.453			2'56.134	0'48.971		1'12.674	0'41.769		1'17.336	0'44.086		1'14.648	0'42.879	
2ª - 3	1'53.230	0'37.703			3'38.621	0'42.487		1'48.768	0'36.094		1'56.025	0'38.689		1'51.295	0'36.647	
3ª - 1	0'32.262	0'32.262		256.533	0'33.693	0'33.693	260.870	0'30.892	0'30.892	260.241	0'32.819	0'32.819	255.925	0'31.711	0'31.711	258.374
3ª - 2	1'15.435	0'43.173			1'19.706	0'46.013		1'12.358	0'41.466		1'16.775	0'43.956		1'14.326	0'42.615	
3ª - 3	1'52.510	0'37.075			2'00.266	0'40.560		1'48.249	0'35.891		1'55.558	0'38.783		1'51.092	0'36.766	
4ª - 1	0'32.132	0'32.132		256.533	0'36.735	0'36.735	260.870	0'31.547	0'31.547	261.502	0'32.959	0'32.959	257.143	0'31.916	0'31.916	258.374
4ª - 2	1'15.711	0'43.579			1'26.584	0'49.849		1'17.960	0'46.413		1'17.050	0'44.091		1'14.757	0'42.841	
4ª - 3	1'53.148	0'37.437			2'07.701	0'41.117		2'02.293	0'44.333	PIT	1'56.402	0'39.352		1'51.559	0'36.802	
5ª - 1	0'33.257	0'33.257		257.143	0'33.554	0'33.554	262.774	2'35.965	2'35.965	178.808	0'33.327	0'33.327	257.757	0'31.769	0'31.769	258.993
5ª - 2	1'17.310	0'44.053			1'19.325	0'45.771		3'18.763	0'42.798		1'18.005	0'44.678		1'14.539	0'42.770	
5ª - 3	2'08.599	0'51.289		PIT	1'59.601	0'40.276		3'57.322	0'38.559		1'57.625	0'39.620		1'51.493	0'36.954	
6ª - 1	3'49.118	3'49.118		177.925	0'33.510	0'33.510	263.415	0'30.847	0'30.847	259.616	0'33.090	0'33.090	258.374	0'31.849	0'31.849	260.241
6ª - 2	4'31.810	0'42.692			1'19.859	0'46.349		1'12.091	0'41.244		1'18.823	0'45.733		1'15.077	0'43.228	
6ª - 3	5'08.545	0'36.735			2'00.075	0'40.216		1'48.245	0'36.154		1'57.985	0'39.162		1'53.391	0'38.314	
7ª - 1	0'31.576	0'31.576		255.320	0'33.589	0'33.589	263.415	0'30.516	0'30.516	262.136	0'33.475	0'33.475	257.757	0'32.511	0'32.511	255.320
7ª - 2	1'14.560	0'42.984			1'18.731	0'45.142		1'12.932	0'42.416		1'20.407	0'46.932		1'15.598	0'43.087	
7ª - 3	1'51.335	0'36.775			1'58.391	0'39.660		1'49.415	0'36.483		2'09.254	0'48.847	PIT	1'52.979	0'37.381	
8ª - 1	0'31.825	0'31.825		256.533	0'34.162	0'34.162	264.059	0'30.821	0'30.821	260.870	2'39.258	2'39.258	173.914	0'31.881	0'31.881	258.374
8ª - 2	1'14.515	0'42.690			1'19.499	0'45.337		1'12.175	0'41.354		3'24.215	0'44.957		1'15.627	0'43.746	
8ª - 3	1'51.300	0'36.785			1'59.872	0'40.373		1'47.838	0'35.663		4'03.448	0'39.233		1'52.614	0'36.987	
9ª - 1	0'31.421	0'31.421		257.143	0'33.492	0'33.492	262.774	0'30.661	0'30.661	262.136	0'33.546	0'33.546	257.143	0'31.848	0'31.848	258.993
9ª - 2	1'13.747	0'42.326			1'18.592	0'45.100		1'11.901	0'41.240		1'18.293	0'44.747		1'15.028	0'43.180	
9ª - 3	1'51.613	0'37.866			1'57.897	0'39.305		1'51.518	0'39.617		1'58.017	0'39.724		2'00.820	0'45.792	PIT
10ª - 1	0'31.893	0'31.893		257.143	0'33.182	0'33.182	263.415	0'30.731	0'30.731	262.136	0'32.852	0'32.852	258.993			
10ª - 2	1'14.585	0'42.692			1'17.934	0'44.752		1'11.777	0'41.046		1'18.467	0'45.615				
10ª - 3	2'07.114	0'52.529		PIT	1'57.309	0'39.375		1'47.655	0'35.878		1'57.997	0'39.530				
11ª - 1					0'39.131	0'39.131	204.934	0'33.689	0'33.689	262.774	0'33.099	0'33.099	257.757			
11ª - 2					1'29.609	0'50.478		1'18.015	0'44.326		1'18.870	0'45.771				
11ª - 3					2'27.849	0'58.240	PIT	2'03.571	0'45.556	PIT	1'58.223	0'39.353				
12ª - 1								2'25.031	2'25.031	176.760	0'32.949	0'32.949	258.993			
12ª - 2								3'08.267	0'43.236		1'17.600	0'44.651				
12ª - 3								3'49.970	0'41.703		1'56.902	0'39.302				
13ª - 1								0'33.837	0'33.837	260.241	0'32.991	0'32.991	257.757			
13ª - 2								1'16.753	0'42.916		1'17.616	0'44.625				
13ª - 3								1'56.098	0'39.345		1'56.697	0'39.081				
14ª - 1								0'30.481	0'30.481	259.616	0'32.810	0'32.810	259.616			
14ª - 2								1'11.622	0'41.141		1'17.271	0'44.461				
14ª - 3								2'19.727	1'08.105		1'56.978	0'39.707				
15ª - 1								0'30.661	0'30.661	258.993	0'33.158	0'33.158	258.374			
15ª - 2								1'11.651	0'40.990		1'18.327	0'45.169				
15ª - 3								1'46.876	0'35.225		1'57.408	0'39.081				
16ª - 1								0'30.419	0'30.419	262.774	0'33.711	0'33.711	258.374			
16ª - 2								1'11.446	0'41.027		1'18.375	0'44.664				
16ª - 3								2'02.544	0'51.098	PIT	1'57.573	0'39.198				
17ª - 1											0'32.747	0'32.747	257.757			
17ª - 2											1'16.812	0'44.065				
17ª - 3											1'55.296	0'38.484				
18ª - 1											0'32.379	0'32.379	259.616			
18ª - 2											1'16.357	0'43.978				
18ª - 3											1'54.936	0'38.579				
19ª - 1											0'32.744	0'32.744	258.374			
19ª - 2											1'17.158	0'44.414				
19ª - 3											1'55.804	0'38.646				
20ª - 1											0'32.882	0'32.882	260.241			
20ª - 2											1'19.363	0'46.481				
20ª - 3											2'08.008	0'48.645	PIT			
21ª - 1											0'52.237	0'52.237	184.616			
21ª - 2											1'37.618	0'45.381				
21ª - 3											2'19.930	0'42.312				



Circuito de Catalunya
Winter Series Barcelona
Free practice - 7

LAP ANALYSIS

18/02/2017

Number	14			15			16			25			43		
	Lap Time	Partial	Speed	Lap Time	Partial	Speed	Lap Time	Partial	Speed	Lap Time	Partial	Speed	Lap Time	Partial	Speed
22 ^a - 1										0'32.754	0'32.754	258.374			
22 ^a - 2										1'18.100	0'45.346				
22 ^a - 3										1'57.189	0'39.089				
23 ^a - 1										0'32.947	0'32.947	258.374			
23 ^a - 2										1'17.277	0'44.330				
23 ^a - 3										1'56.389	0'39.112				
24 ^a - 1										0'32.482	0'32.482	259.616			
24 ^a - 2										1'16.638	0'44.156				
24 ^a - 3										1'55.206	0'38.568				
25 ^a - 1										0'32.811	0'32.811	259.616			
25 ^a - 2										1'16.988	0'44.177				
25 ^a - 3										1'55.445	0'38.457				
26 ^a - 1										0'32.480	0'32.480	259.616			
26 ^a - 2										1'17.656	0'45.176				
26 ^a - 3										2'07.954	0'50.298	PIT			
27 ^a - 1															
27 ^a - 2															
27 ^a - 3															
28 ^a - 1															
28 ^a - 2															
28 ^a - 3															

Ideal Lap	
0'31.421	0'31.421
1'13.747	0'42.326
1'50.482	0'36.735

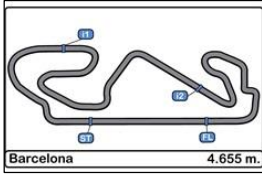
Ideal Lap	
0'33.182	0'33.182
1'17.934	0'44.752
1'57.239	0'39.305

Ideal Lap	
0'30.419	0'30.419
1'11.409	0'40.990
1'46.634	0'35.225

Ideal Lap	
0'32.379	0'32.379
1'16.335	0'43.956
1'54.792	0'38.457

Ideal Lap	
0'31.711	0'31.711
1'14.326	0'42.615
1'50.973	0'36.647

Ideal Best Lap	
0'30.419	0'30.419
1'11.306	0'40.887
1'46.531	0'35.225

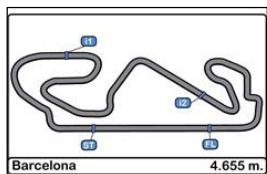


Circuit de Catalunya
Winter Series Barcelona
Free practice - 7

LAP ANALYSIS

18/02/2017

Number	46			77			89			104			555			
	Lap	Lap Time	Partial	Speed	Lap Time	Partial	Speed	Lap Time	Partial	Speed	Lap Time	Partial	Speed	Lap Time	Partial	Speed
1 ^a - 1	0'35.690	0'35.690	246.014	0'34.469	0'34.469	251.749	0'40.896	0'40.896	218.624	0'30.812	0'30.812	258.993	0'33.722	0'33.722	256.533	
1 ^a - 2	1'24.379	0'48.689		1'21.213	0'46.744		1'35.141	0'54.245		1'12.557	0'41.745		1'17.951	0'44.229		
1 ^a - 3	2'05.098	0'40.719		2'01.671	0'40.458		2'23.636	0'48.495		1'48.685	0'36.128		1'55.602	0'37.651		
2 ^a - 1	0'34.868	0'34.868	249.423	0'33.502	0'33.502	255.925	0'36.111	0'36.111	255.320	0'30.573	0'30.573	260.241	0'38.180	0'38.180	190.813	
2 ^a - 2	1'23.067	0'48.199		1'19.397	0'45.895		1'26.204	0'50.093		1'12.168	0'41.595		1'26.438	0'48.258		
2 ^a - 3	2'03.260	0'40.193		1'58.941	0'39.544		2'10.611	0'44.407		1'48.193	0'36.025		2'16.826	0'50.388	PIT	
3 ^a - 1	0'34.362	0'34.362	250.001	0'33.923	0'33.923	254.118	0'36.414	0'36.414	252.928	0'30.586	0'30.586	261.502	7'55.866	7'55.866	117.520	
3 ^a - 2	1'20.106	0'45.744		1'20.195	0'46.272		1'26.078	0'49.664		1'13.009	0'42.423		8'41.604	0'45.738		
3 ^a - 3	1'59.457	0'39.351		2'00.562	0'40.367		2'10.009	0'43.931		1'51.657	0'38.648		9'20.657	0'39.053		
4 ^a - 1	0'34.260	0'34.260	251.163	0'34.717	0'34.717	249.423	0'36.246	0'36.246	255.320	0'30.778	0'30.778	260.241	0'32.565	0'32.565	253.522	
4 ^a - 2	1'19.328	0'45.068		1'21.203	0'46.486		1'24.996	0'48.750		1'12.223	0'41.445		1'17.088	0'44.523		
4 ^a - 3	1'57.850	0'38.522		2'01.996	0'40.793		2'08.338	0'43.342		1'48.475	0'36.252		2'01.437	0'44.349		
5 ^a - 1	0'33.985	0'33.985	250.581	0'33.984	0'33.984	255.925	0'35.838	0'35.838	256.533	0'31.684	0'31.684	263.415	0'31.267	0'31.267	258.374	
5 ^a - 2	1'19.421	0'45.436		1'20.787	0'46.803		1'24.406	0'48.568		1'14.727	0'43.043		1'13.595	0'42.328		
5 ^a - 3	1'58.181	0'38.760		2'14.460	0'53.673	PIT	2'06.955	0'42.549		2'00.066	0'45.339	PIT	1'50.042	0'36.447		
6 ^a - 1	0'33.638	0'33.638	251.163	9'32.338	9'32.338	161.195	0'35.857	0'35.857	256.533	5'02.144	5'02.144	159.528	0'30.819	0'30.819	260.870	
6 ^a - 2	1'18.534	0'44.896		10'18.654	0'46.316		1'25.535	0'49.678		5'46.988	0'44.844		1'12.303	0'41.484		
6 ^a - 3	1'57.983	0'39.449		10'57.851	0'39.197		2'09.310	0'43.775		6'24.895	0'37.907		1'48.452	0'36.149		
7 ^a - 1	0'33.420	0'33.420	251.163	0'33.216	0'33.216	251.749	0'36.380	0'36.380	251.163	0'30.949	0'30.949	260.870	0'31.037	0'31.037	260.870	
7 ^a - 2	1'18.134	0'44.714		1'17.603	0'44.387		1'25.078	0'48.698		1'12.495	0'41.546		1'12.732	0'41.695		
7 ^a - 3	1'56.548	0'38.414		1'56.255	0'38.652		2'07.579	0'42.501		1'48.588	0'36.093		1'49.997	0'37.265		
8 ^a - 1	0'33.586	0'33.586	251.749	0'33.155	0'33.155	250.581	0'35.699	0'35.699	257.143	0'30.662	0'30.662	260.870	0'31.162	0'31.162	260.241	
8 ^a - 2	1'18.462	0'44.876		1'17.318	0'44.163		1'23.779	0'48.080		1'12.926	0'42.264		1'12.803	0'41.641		
8 ^a - 3	1'57.087	0'38.625		1'56.010	0'38.692		2'06.448	0'42.669		1'50.475	0'37.549		1'48.906	0'36.103		
9 ^a - 1	0'34.261	0'34.261	252.928	0'33.812	0'33.812	251.749	0'35.898	0'35.898	254.717	0'31.165	0'31.165	261.502	0'30.989	0'30.989	260.870	
9 ^a - 2	1'18.771	0'44.510		1'18.469	0'44.657		1'24.312	0'48.414		1'13.234	0'42.069		1'12.394	0'41.405		
9 ^a - 3	1'57.173	0'38.402		1'57.032	0'38.563		2'08.485	0'44.173		1'49.707	0'36.473		1'48.443	0'36.049		
10 ^a - 1	0'33.591	0'33.591	250.581	0'33.651	0'33.651	247.140	0'35.946	0'35.946	255.925	0'30.708	0'30.708	260.870	0'30.932	0'30.932	260.870	
10 ^a - 2	1'18.187	0'44.596		1'17.890	0'44.239		1'24.223	0'48.277		1'12.308	0'41.600		1'12.988	0'42.056		
10 ^a - 3	1'57.971	0'39.784		1'58.441	0'40.551		2'08.442	0'44.219		1'48.172	0'35.864		1'48.950	0'35.962		
11 ^a - 1	0'33.461	0'33.461	251.163	0'36.903	0'36.903	204.934	0'35.800	0'35.800	253.522	0'30.740	0'30.740	260.870	0'31.047	0'31.047	260.870	
11 ^a - 2	1'18.034	0'44.573		1'25.979	0'49.076		1'24.996	0'49.196		1'12.190	0'41.450		1'12.779	0'41.732		
11 ^a - 3	1'56.612	0'38.578		2'21.711	0'55.732	PIT	2'33.741	1'08.745	PIT	1'57.782	0'45.592	PIT	1'49.109	0'36.330		
12 ^a - 1	0'33.524	0'33.524	251.163	5'18.800	5'18.800	164.384	11'35.953	11'35.953	142.293	4'11.234	4'11.234	177.340	0'30.865	0'30.865	262.136	
12 ^a - 2	1'18.069	0'44.545		6'05.218	0'46.418		12'28.045	0'52.092		4'55.673	0'44.439		1'12.369	0'41.504		
12 ^a - 3	1'56.624	0'38.555		6'47.159	0'41.941		13'11.218	0'43.173		5'34.377	0'38.704		1'48.670	0'36.301		
13 ^a - 1	0'33.148	0'33.148	249.423	0'34.098	0'34.098	254.717	0'36.082	0'36.082	255.320	0'32.885	0'32.885	257.143	0'31.055	0'31.055	262.136	
13 ^a - 2	1'18.192	0'45.044		1'20.572	0'46.474		1'32.228	0'56.146		1'16.419	0'43.534		1'13.006	0'41.951		
13 ^a - 3	1'57.112	0'38.920		2'01.621	0'41.049		2'21.608	0'49.380		1'54.548	0'38.129		1'49.309	0'36.303		
14 ^a - 1	0'33.163	0'33.163	251.163	0'34.865	0'34.865	254.717	0'37.424	0'37.424	254.717	0'32.473	0'32.473	259.616	0'30.941	0'30.941	262.136	
14 ^a - 2	1'17.815	0'44.652		1'23.848	0'48.983		1'26.960	0'49.536		1'15.414	0'42.941		1'12.667	0'41.726		
14 ^a - 3	1'56.889	0'39.074		2'04.144	0'40.296		2'09.553	0'42.593		1'53.571	0'38.157		1'51.779	0'39.112		
15 ^a - 1	0'33.413	0'33.413	250.581	0'33.769	0'33.769	252.928	0'35.968	0'35.968	257.143	0'32.328	0'32.328	257.757	0'31.653	0'31.653	258.993	
15 ^a - 2	1'18.088	0'44.675		1'19.079	0'45.310		1'24.685	0'48.717		1'15.281	0'42.953		1'14.178	0'42.525		
15 ^a - 3	1'57.769	0'39.681		2'00.409	0'41.330		2'07.542	0'42.857		1'53.263	0'37.982		1'50.961	0'36.783		
16 ^a - 1	0'33.451	0'33.451	250.000	0'34.541	0'34.541	257.143	0'35.377	0'35.377	257.143	0'32.350	0'32.350	258.993	0'31.502	0'31.502	261.502	
16 ^a - 2	1'18.200	0'44.749		1'21.698	0'47.157		1'23.239	0'47.862		1'15.181	0'42.831		1'13.412	0'41.910		
16 ^a - 3	1'56.814	0'38.614		2'02.038	0'40.340		2'04.846	0'41.607		1'53.053	0'37.872		1'49.733	0'36.321		
17 ^a - 1	0'33.476	0'33.476	251.163	0'34.149	0'34.149	257.143	0'35.390	0'35.390	257.143	0'31.982	0'31.982	258.993	0'30.916	0'30.916	262.774	
17 ^a - 2	1'17.882	0'44.406		1'20.494	0'46.345		1'22.877	0'47.487		1'15.057	0'43.075		1'12.876	0'41.960		
17 ^a - 3	1'56.156	0'38.274		2'00.431	0'39.937		2'04.199	0'41.322		1'52.675	0'37.618		1'49.111	0'36.235		
18 ^a - 1	0'33.151	0'33.151	251.163	0'34.638	0'34.638	257.757	0'34.400	0'34.400	257.757	0'32.121	0'32.121	259.616	0'31.005	0'31.005	264.059	
18 ^a - 2	1'17.497	0'44.346		1'21.519	0'46.881		1'21.750	0'47.350		2'16.886	1'44.765		1'13.647	0'42.642		
18 ^a - 3	1'55.959	0'38.462		2'14.900	0'53.381	PIT	2'02.961	0'41.211		3'14.045	0'57.159	PIT	1'52.557	0'38.910		
19 ^a - 1	0'33.304	0'33.304	251.163				0'40.117	0'40.117	257.143	5'01.546	5'01.546	177.050	0'31.479	0'31.479	260.870	
19 ^a - 2	1'17.688	0'44.384					1'40.273	1'00.156		5'47.165	0'45.619		1'13.339	0'41.860		
19 ^a - 3	1'55.767	0'38.079					2'54.423	1'14.150	PIT	6'25.873	0'38.708		1'49.666	0'36.327		
20 ^a - 1	0'33.274	0'33.274	251.749							0'32.663	0'32.663	258.374				



Circuito de Catalunya
Winter Series Barcelona
Free practice - 7

LAP ANALYSIS

18/02/2017

Number	46			77			89			104			555			
	Lap	Lap Time	Partial	Speed	Lap Time	Partial	Speed	Lap Time	Partial	Speed	Lap Time	Partial	Speed	Lap Time	Partial	Speed
22 ^a - 1	0'34.183	0'34.183		244.344							0'38.758	0'38.758	176.183	0'31.133	0'31.133	260.870
22 ^a - 2	1'19.605	0'45.422									1'25.443	0'46.685		1'12.492	0'41.359	
22 ^a - 3	1'58.652	0'39.047									2'17.715	0'52.272	PIT	1'48.318	0'35.826	
23 ^a - 1	0'33.360	0'33.360		253.522										0'31.029	0'31.029	263.415
23 ^a - 2	1'18.551	0'45.191												1'14.794	0'43.765	
23 ^a - 3	1'59.048	0'40.497												1'59.493	0'44.699	PIT
24 ^a - 1	0'34.010	0'34.010		251.163												
24 ^a - 2	1'19.860	0'45.850														
24 ^a - 3	1'58.961	0'39.101														
25 ^a - 1	0'33.366	0'33.366		252.337												
25 ^a - 2	1'18.029	0'44.663														
25 ^a - 3	1'56.619	0'38.590														
26 ^a - 1	0'33.109	0'33.109		252.337												
26 ^a - 2	1'17.383	0'44.274														
26 ^a - 3	1'55.523	0'38.140														
27 ^a - 1	0'33.279	0'33.279		252.928												
27 ^a - 2	1'18.008	0'44.729														
27 ^a - 3	1'56.389	0'38.381														
28 ^a - 1	0'33.579	0'33.579		252.337												
28 ^a - 2	1'18.355	0'44.776														
28 ^a - 3	2'06.576	0'48.221		PIT												

Ideal Lap	
0'33.109	0'33.109
1'17.383	0'44.274
1'55.462	0'38.079

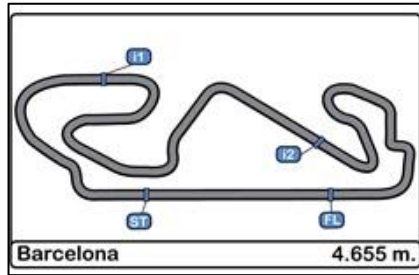
Ideal Lap	
0'33.155	0'33.155
1'17.318	0'44.163
1'55.881	0'38.563

Ideal Lap	
0'34.400	0'34.400
1'21.750	0'47.350
2'02.961	0'41.211

Ideal Lap	
0'30.573	0'30.573
1'12.018	0'41.445
1'47.882	0'35.864

Ideal Lap	
0'30.819	0'30.819
1'12.178	0'41.359
1'48.004	0'35.826

Ideal Best Lap	
0'30.419	0'30.419
1'11.306	0'40.887
1'46.531	0'35.225

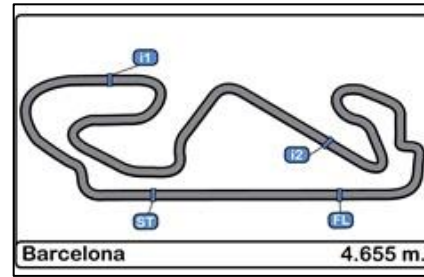


Circuito de Catalunya
Winter Series Barcelona
Free practice - 7

Best Sectors Results

18/02/2017

Sector - 1		Sector - 2		Sector - 3		Ideal Lap vs Best Lap					
Ord.	Nº Driver	Time	Nº Driver	Time	Nº Driver	Time	Ord.	Nº Driver	Ideal Lap	Best Lap	Ord.
1	16 Hahn - Khodair	30.419	8 Perazzini - Cioci	40.887	16 Hahn - Khodair	35.225	1	16 Hahn - Khodair	1'46.634	1'46.876	2
2	8 Perazzini - Cioci	30.562	16 Hahn - Khodair	40.990	8 Perazzini - Cioci	35.313	2	8 Perazzini - Cioci	1'46.762	1'46.809	1
3	104 Basso - Bouverg	30.573	555 Hamaguchi - Liuzzi	41.359	555 Hamaguchi - Liuzzi	35.826	3	104 Basso - Bouverg	1'47.882	1'48.172	3
4	9 Ishikawa - Beretta	30.776	104 Basso - Bouverg	41.445	104 Basso - Bouverg	35.864	4	555 Hamaguchi - Liuzzi	1'48.004	1'48.318	4
5	555 Hamaguchi - Liuzzi	30.819	11 Liberati - Kang	41.793	9 Ishikawa - Beretta	35.998	5	9 Ishikawa - Beretta	1'48.591	1'49.254	5
6	11 Liberati - Kang	31.039	9 Ishikawa - Beretta	41.817	11 Liberati - Kang	36.293	6	11 Liberati - Kang	1'49.125	1'49.262	6
7	14 Claudio Schiavoni	31.421	14 Claudio Schiavoni	42.326	43 Philip Morin	36.647	7	14 Claudio Schiavoni	1'50.482	1'51.300	8
8	5 Songyang - Caldarelli	31.619	43 Philip Morin	42.615	14 Claudio Schiavoni	36.735	8	43 Philip Morin	1'50.973	1'51.092	7
9	43 Philip Morin	31.711	5 Songyang - Caldarelli	42.667	5 Songyang - Caldarelli	37.266	9	5 Songyang - Caldarelli	1'51.552	1'51.674	9
10	25 Dunbar - Mowlem	32.379	25 Dunbar - Mowlem	43.956	46 Grimes - Mowlem	38.079	10	25 Dunbar - Mowlem	1'54.792	1'54.936	10
11	46 Grimes - Mowlem	33.109	77 Pavel Strukov	44.163	25 Dunbar - Mowlem	38.457	11	46 Grimes - Mowlem	1'55.462	1'55.523	11
12	77 Pavel Strukov	33.155	46 Grimes - Mowlem	44.274	77 Pavel Strukov	38.563	12	77 Pavel Strukov	1'55.881	1'56.010	12
13	15 Peter Goerke	33.182	15 Peter Goerke	44.752	15 Peter Goerke	39.305	13	15 Peter Goerke	1'57.239	1'57.309	13
14	12 Deborah Mayer	33.864	12 Deborah Mayer	46.317	12 Deborah Mayer	40.449	14	12 Deborah Mayer	2'00.630	2'00.857	14
15	89 Heh - Caldani	34.400	89 Heh - Caldani	47.350	89 Heh - Caldani	41.211	15	89 Heh - Caldani	2'02.961	2'02.961	15



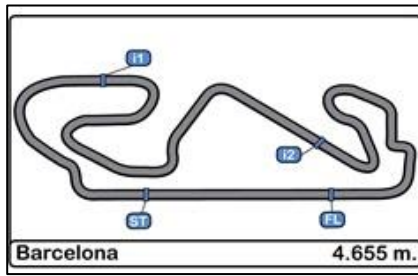
Circuito de Catalunya
Winter Series Barcelona
Free practice - 7

Best Top Speeds

18/02/2017

Ord.	Nº	Entrant / Team	Nat.	Driver	Nat.	St.	Driver 2	Nat.	St.	Vehicle	Cat.	Cla.	Top 1		Top 2		Top 3		Top 4		Top 5		Avg.
													Km/h	Lap	Km/h	Lap	Km/h	Lap	Km/h	Lap	Km/h	Lap	
1	11	Raton Racing	ITA	Edoardo Liberati	ITA	Silver	Link Kang	CHN	Silver	Lamborghini Huracan GT3	PRO	1º	264.706	8	264.706	10	264.059	11	264.059	7	263.415	2	264.189
2	15	Kessel Racing	CHE	Peter Goerke	CHE	Bronze				Ferrari 458 Challenge			264.059	9	263.415	7	263.415	11	263.415	8	262.774	6	263.415
3	555	FFF Racing Team by ACM	CHN	Hiroshi Hamaguchi	JPN	Bronze	Vitantonio Liuzzi	ITA	Platinum	Lamborghini Huracan GT3	PROAM	1º	264.059	19	263.415	21	263.415	24	262.774	18	262.136	14	263.159
4	104	RACE	ESP	Marzio Basso			Victor Bouverg			BMW M6 GT3			263.415	6	261.501	4	261.501	10	260.870	8	260.870	9	261.631
5	16	Drivex School	ESP	Marcelo Hahn	BRA		Allam Khodair	BRA		Audi R8 LMS Ultra			262.774	12	262.774	17	262.136	8	262.136	10	262.136	11	262.391
6	9	Spirit of Race	CHE	Motoaki Ishikawa	JPN	Bronze	Olivier Beretta	ITA	Gold	Ferrari 488 GT3	PROAM	2º	262.136	6	262.136	9	262.136	11	261.501	14	261.501	21	261.882
7	8	AF Corse	ITA	Piergiuseppe Perazzini	ITA	Bronze	Marco Cioci	ITA	Gold	Ferrari 488 GT3	PROAM	3º	261.501	22	260.241	16	260.241	21	259.615	10	259.615	19	260.243
8	25	FF Corse	GBR	Ivor Dunbar	GBR	Bronze	Johnny Mowlem	GBR	Gold	Ferrari 488 GT3	PROAM	4º	260.241	21	259.615	15	259.615	19	259.615	25	259.615	26	259.741
9	43	PRO GT by Philippe Almeras	FRA	Philip Morin	SWE					Porsche 991 GT3 Cup			260.241	7	258.993	10	258.993	6	258.373	3	258.373	5	258.995
10	14	Kessel Racing	CHE	Claudio Schiavoni	ITA	Bronze				Ferrari 458 GT3	AM	1º	257.757	2	257.143	3	257.143	6	257.143	10	257.143	11	257.266
11	77	Stile F Squadra Corse	SMR	Jonathan Hui	RUS	Bronze				Ferrari 458 GT3	AM	2º	257.757	19	257.143	17	257.143	18	255.924	3	255.924	6	256.778
12	89	Spirit of Race	CHE	Peter Heh	SGP		Nicola Caldani	ITA		Ferrari 458 Challenge			257.756	19	257.143	9	257.143	20	257.143	16	257.143	17	257.266
13	5	SF Racing	CHN	Fu Songyang	CHN	Bronze	Andrea Caldarelli	ITA	Gold	Ferrari 488 GT3	PROAM	5º	257.143	11	256.532	3	256.532	8	255.924	9	255.924	13	256.411
14	46	FF Corse	GBR	Bonany Grimes	GBR	Bronze	Johnny Mowlem	GBR	Gold	Ferrari 458 Challenge			253.521	24	252.927	10	252.927	28	252.336	26	252.336	27	252.810
15	12	Kessel Racing	CHE	Deborah Mayer	FRA	Bronze				Ferrari 458 GT3	AM	3º	251.748	4	251.748	5	251.748	6	251.163	3	251.163	2	251.514



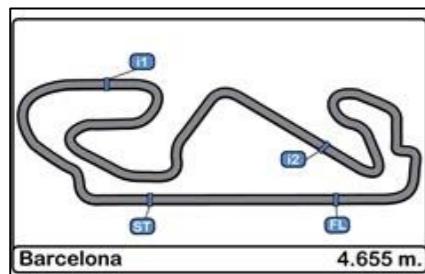


Circuito de Catalunya
Winter Series Barcelona
Free practice - 7

Fastest Lap Sequence

18/02/2017

<u>Time of Day</u>	<u>Session Time</u>	<u>Nº</u>	<u>Entrant / Team</u>	<u>Nat.</u>	<u>Driver</u>	<u>Nat.</u>	<u>St.</u>	<u>Driver 2</u>	<u>Nat.</u>	<u>St.</u>	<u>Vehicle</u>	<u>Cat.</u>	<u>Time</u>	<u>Km/h</u>	<u>Lap</u>
14:28'50.248	2'43.328	104	RACE	ESP	Marzio Basso			Victor Bouverg			BMW M6 GT3		1'48.685	154.189	2
14:30'38.451	4'31.521	104	RACE	ESP	Marzio Basso			Victor Bouverg			BMW M6 GT3		1'48.193	154.890	3
14:45'01.452	18'54.566	16	Drivex School	ESP	Marcelo Hahn	BRA		Allam Khodair	BRA		Audi R8 LMS Ultra		1'47.838	155.400	9
14:48'40.558	22'33.739	16	Drivex School	ESP	Marcelo Hahn	BRA		Allam Khodair	BRA		Audi R8 LMS Ultra		1'47.655	155.664	11
15:00'36.799	34'29.981	16	Drivex School	ESP	Marcelo Hahn	BRA		Allam Khodair	BRA		Audi R8 LMS Ultra		1'46.876	156.799	16
15:16'51.945	50'45.154	8	AF Corse	ITA	Piergiuseppe Perazzini	ITA	Bronze	Marco Cioci	ITA	Gold	Ferrari 488 GT3	PROAM	1'46.809	156.897	20

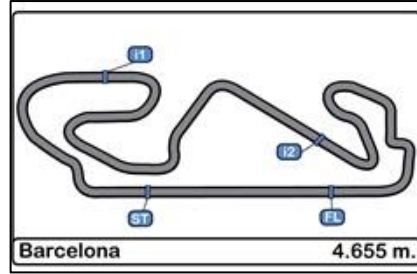


Circuito de Catalunya Winter Series Barcelona

Event Maximum Speed

18/02/2017

Ord.	Nº	Entrant / Team	Nat.	Driver	Nat.	St.	Driver 2	Nat.	St.	Vehicle	Cat.	Cla.	Km/h	Lap	Session
1	11	Raton Racing	ITA	Edoardo Liberati	ITA	Silver	Link Kang	CHN	Silver	Lamborghini Huracan GT3	PRO	1º	266.667	14	Free practice - 6
2	15	Kessel Racing	CHE	Peter Goerke	CHE	Bronze				Ferrari 458 Challenge			266.667	7	Free practice - 6
3	555	FFF Racing Team by ACM	CHN	Hiroshi Hamaguchi	JPN	Bronze	Vitantonio Liuzzi	ITA	Platinum	Lamborghini Huracan GT3	PROAM	1º	266.010	17	Free practice - 5
4	9	Spirit of Race	CHE	Motoaki Ishikawa	JPN	Bronze	Olivier Beretta	ITA	Gold	Ferrari 488 GT3	PROAM	2º	265.357	12	Free practice - 6
5	25	FF Corse	GBR	Ivor Dunbar	GBR	Bronze	Johnny Mowlem	GBR	Gold	Ferrari 488 GT3	PROAM	3º	264.059	9	Free practice - 5
6	3	RACE	ESP	Marzio Basso			Victor Bouverg			BMW M6 GT3			263.415	20	Free practice - 5
7	8	AF Corse	ITA	Piergiuseppe Perazzini	ITA	Bronze	Marco Cioci	ITA	Gold	Ferrari 488 GT3	PROAM	4º	263.415	21	Free practice - 5
8	104	RACE	ESP	Marzio Basso			Victor Bouverg			BMW M6 GT3			263.415	6	Free practice - 7
9	4	RACE	ESP	Rodolfo Gonzalez			Jesse Kronh			BMW M6 GT3			262.774	18	Free practice - 5
10	16	Drivex School	ESP	Marcelo Hahn	BRA		Allam Khodair	BRA		Audi R8 LMS Ultra			262.774	12	Free practice - 7
11	89	Spirit of Race	CHE	Peter Heh	SGP		Nicola Caldani	ITA		Ferrari 458 Challenge			262.774	4	Free practice - 5
12	5	SF Racing	CHN	Fu Songyang	CHN	Bronze	Andrea Caldarelli	ITA	Gold	Ferrari 488 GT3	PROAM	5º	262.136	5	Free practice - 5
13	12	Kessel Racing	CHE	Deborah Mayer	FRA	Bronze				Ferrari 458 GT3	AM	1º	262.136	4	Free practice - 5
14	14	Kessel Racing	CHE	Claudio Schiavoni	ITA	Bronze				Ferrari 458 GT3	AM	2º	262.136	15	Free practice - 6
15	43	PRO GT by Philippe Almeras	FRA	Philip Morin	SWE					Porsche 991 GT3 Cup			260.870	7	Free practice - 5
16	10	Jordan Racing	GBR	Jordan Witt	GBR		David Witt	GBR		Bentley GT3			258.993	14	Free practice - 6
17	77	Stile F Squadra Corse	SMR	Jonathan Hui	RUS	Bronze				Ferrari 458 GT3	AM	3º	257.757	19	Free practice - 7
18	46	FF Corse	GBR	Bonany Grimes	GBR	Bronze	Johnny Mowlem	GBR	Gold	Ferrari 458 Challenge			254.717	16	Free practice - 5

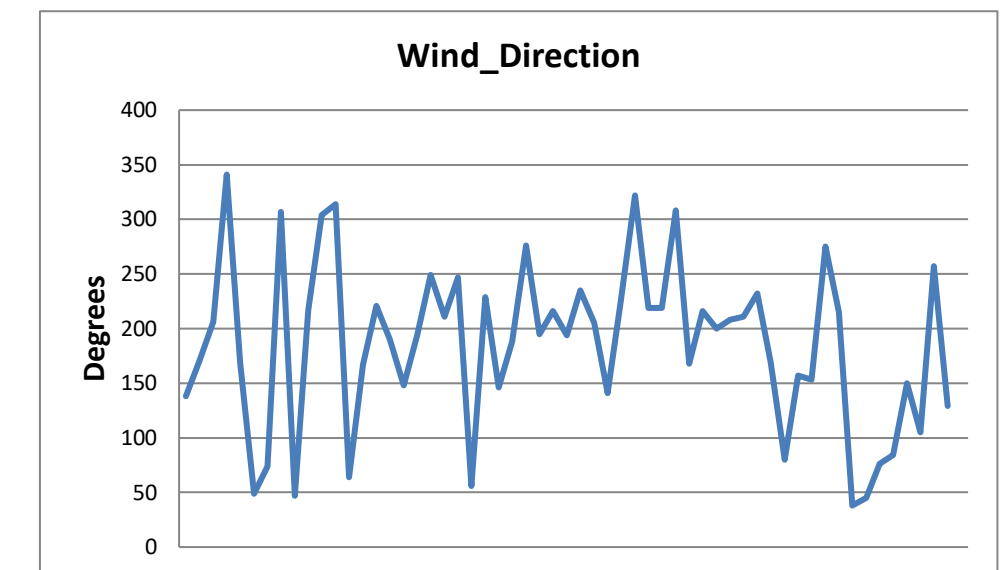
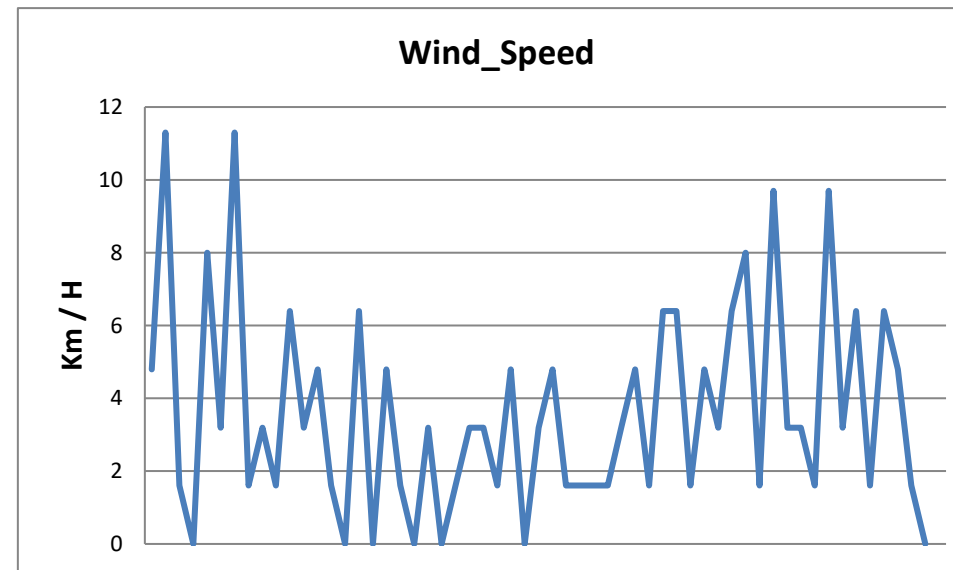
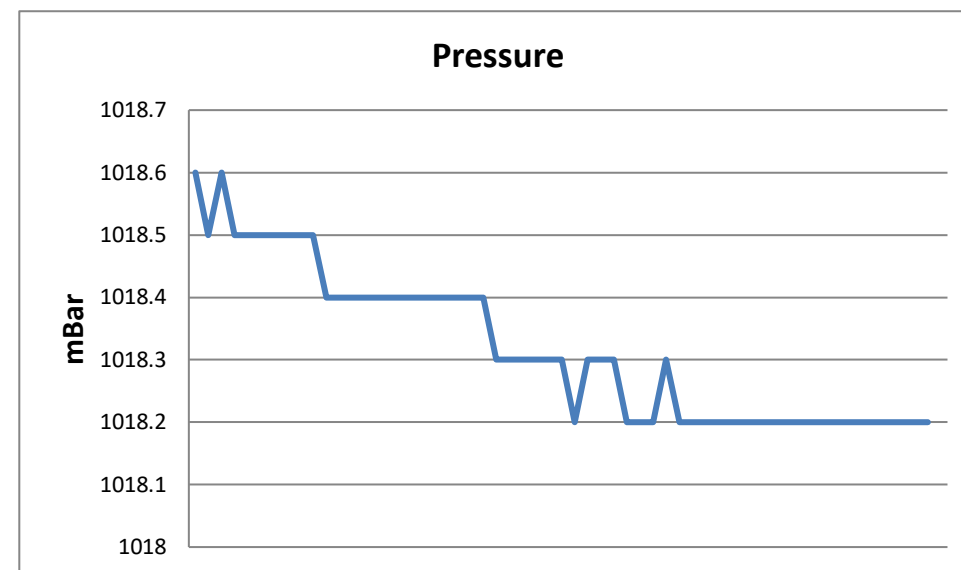
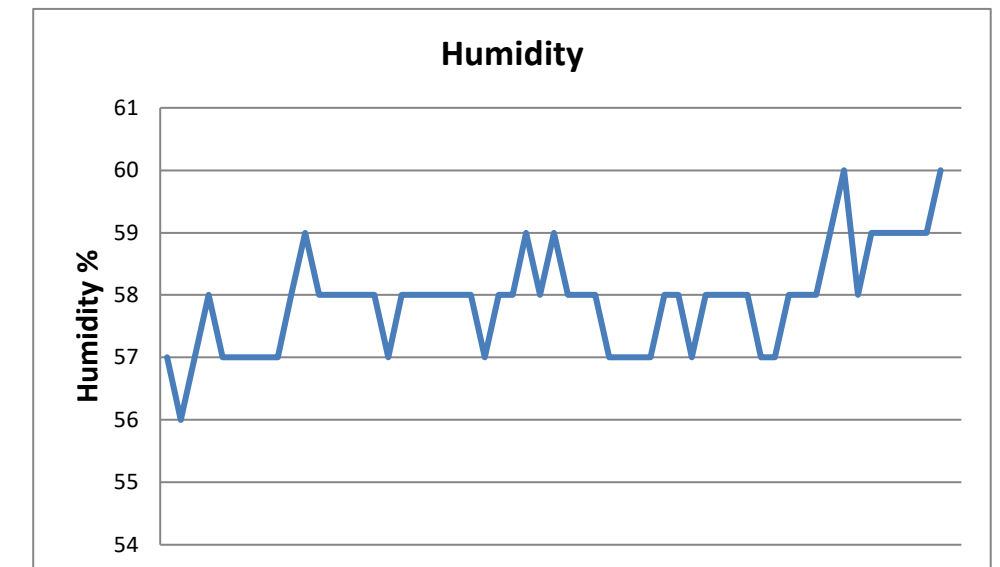
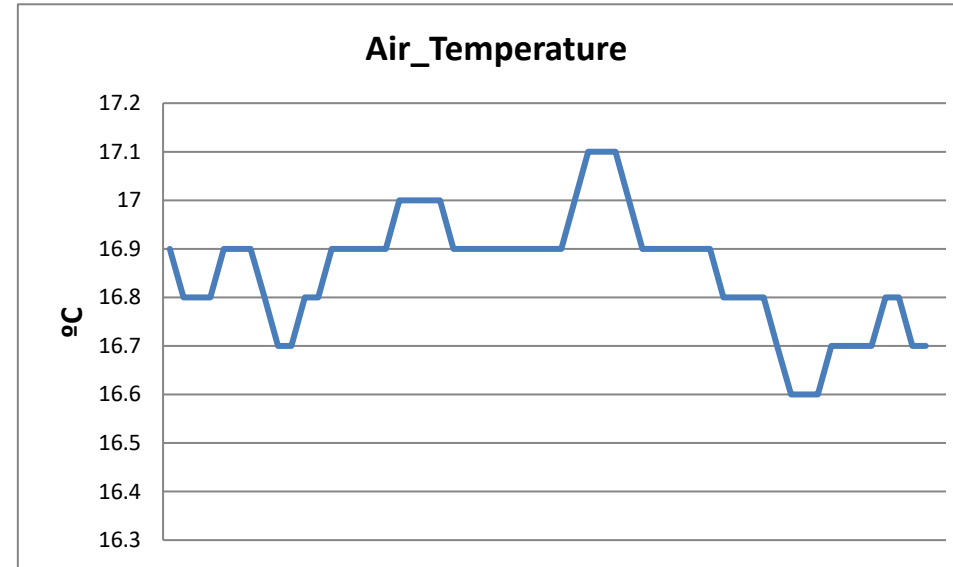
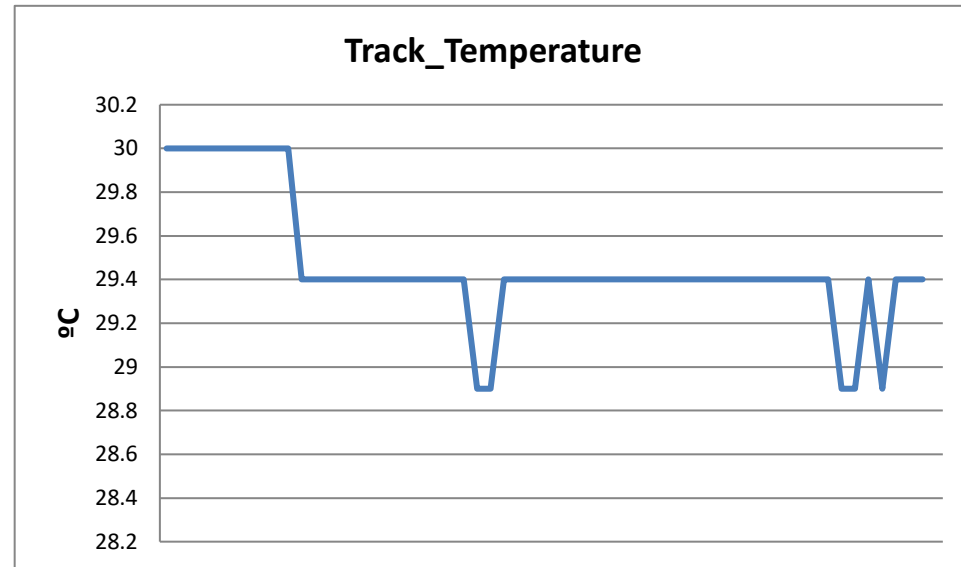


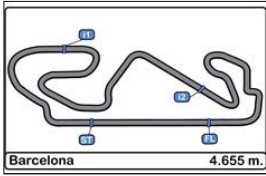
Circuito de Catalunya
Winter Series Barcelona
Free practice - 7

WEATHER REPORT

18/02/2017

Track Status DRY





**Circuito de Catalunya
Winter Series Barcelona**

PRIVATE TESTS 5 - 7 RESULTS

18/02/2017

Ord.	N° Entrant / Team	Nat.	Driver	Nat.	St.	Driver 2	Nat.	St.	Vehicle	Cat.	Cla.	Laps	Laps1	BL1	Time-1	Laps2	BL2	Time-2	Laps	BL3	Time-3	Best	Km/h
1	555 FFF Racing Team by ACM	CHN	Hiroshi Hamaguchi	JPN	Bronze	Vitantonio Liuzzi	ITA	Platinum	Lamborghini Huracan GT3	PROAM	1°	65	20	7	1'45.416	21	14	1'47.856	24	23	1'48.318	1'45.416	158.970
2	8 AF Corse	ITA	Piergiuseppe Perazzini	ITA	Bronze	Marco Cioci	ITA	Gold	Ferrari 488 GT3	PROAM	2°	70	26	10	1'45.608	22	16	1'47.968	22	20	1'46.809	1'45.608	158.681
3	5 SF Racing	CHN	Fu Songyang	CHN	Bronze	Andrea Caldarelli	ITA	Gold	Ferrari 488 GT3	PROAM	3°	54	21	9	1'46.269	17	12	1'46.051	16	15	1'51.674	1'46.051	158.018
4	25 FF Corse	GBR	Ivor Dunbar	GBR	Bronze	Johnny Mowlem	GBR	Gold	Ferrari 488 GT3	PROAM	4°	76	24	10	1'47.825	25	23	1'46.571	27	19	1'54.936	1'46.571	157.247
5	4 RACE	ESP	Rodolfo Gonzalez			Jesse Kronh			BMW M6 GT3			41	22	20	1'48.996	19	13	1'46.616				1'46.616	157.181
6	16 Drivex School	ESP	Marcelo Hahn	BRA		Allam Khodair	BRA		Audi R8 LMS Ultra			43	9	7	1'49.223	17	16	1'49.776	17	16	1'46.876	1'46.876	156.799
7	10 Jordan Racing	GBR	Jordan Witt	GBR		David Witt	GBR		Bentley GT3			14				14	13	1'46.978				1'46.978	156.649
8	9 Spirit of Race	CHE	Motoaki Ishikawa	JPN	Bronze	Olivier Beretta	ITA	Gold	Ferrari 488 GT3	PROAM	5°	70	26	4	1'48.419	23	22	1'47.086	21	6	1'49.254	1'47.086	156.491
9	11 Raton Racing	ITA	Edoardo Liberati	ITA	Silver	Link Kang	CHN	Silver	Lamborghini Huracan GT3	PRO	1°	40	5	3	1'48.579	21	14	1'47.913	14	12	1'49.262	1'47.913	155.292
10	3 RACE	ESP	Marzio Basso			Victor Bouverg			BMW M6 GT3			41	20	9	1'47.922	21	19	1'48.510				1'47.922	155.279
11	104 RACE	ESP	Marzio Basso			Victor Bouverg			BMW M6 GT3			23							23	11	1'48.172	1'48.172	154.920
12	77 Stile F Squadra Corse	SMR	Jonathan Hui	RUS	Bronze				Ferrari 458 GT3	AM	1°	54	18	6	1'49.606	17	16	1'59.844	19	9	1'56.010	1'49.606	152.893
13	43 PRO GT by Philippe Almeras	FRA	Philip Morin	SWE					Porsche 991 GT3 Cup			42	22	17	1'50.751	10	8	1'50.301	10	4	1'51.092	1'50.301	151.930
14	12 Kessel Racing	CHE	Deborah Mayer	FRA	Bronze				Ferrari 458 GT3	AM	2°	36	15	8	1'50.775	15	6	1'58.187	6	5	2'00.857	1'50.775	151.280
15	14 Kessel Racing	CHE	Claudio Schiavoni	ITA	Bronze				Ferrari 458 GT3	AM	3°	33	6	5	1'54.698	16	14	1'51.670	11	9	1'51.300	1'51.300	150.566
16	46 FF Corse	GBR	Bonany Grimes	GBR	Bronze	Johnny Mowlem	GBR	Gold	Ferrari 458 Challenge			73	17	15	1'54.343	27	5	1'53.263	29	27	1'55.523	1'53.263	147.957
17	15 Kessel Racing	CHE	Peter Goerke	CHE	Bronze				Ferrari 458 Challenge			39	12	7	1'58.794	15	14	1'54.725	12	11	1'57.309	1'54.725	146.071
18	89 Spirit of Race	CHE	Peter Heh	SGP		Nicola Caldani	ITA		Ferrari 458 Challenge			57	18	4	1'57.703	19	18	2'05.291	20	19	2'02.961	1'57.703	142.375

Published at:.....

Stewards:	Race Director:	Timekeeper:
------------------	-----------------------	------------------------

